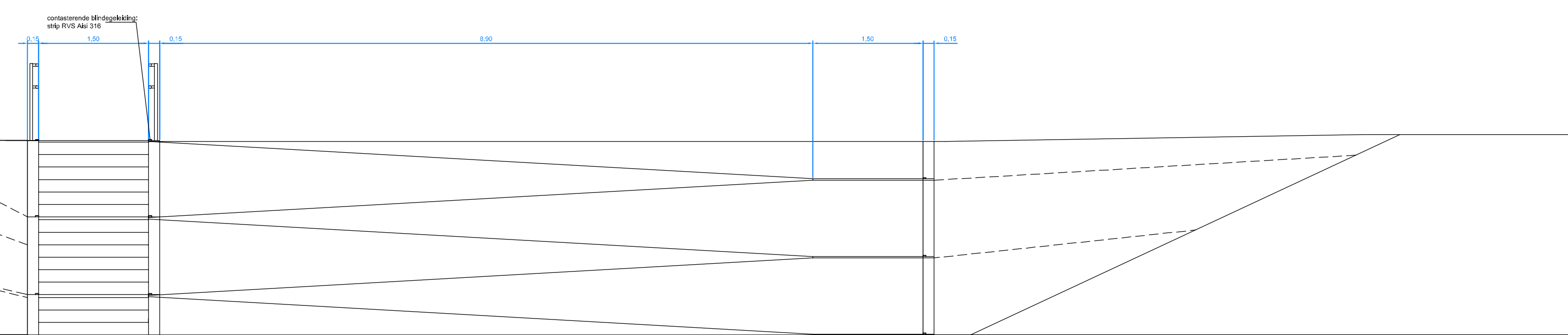
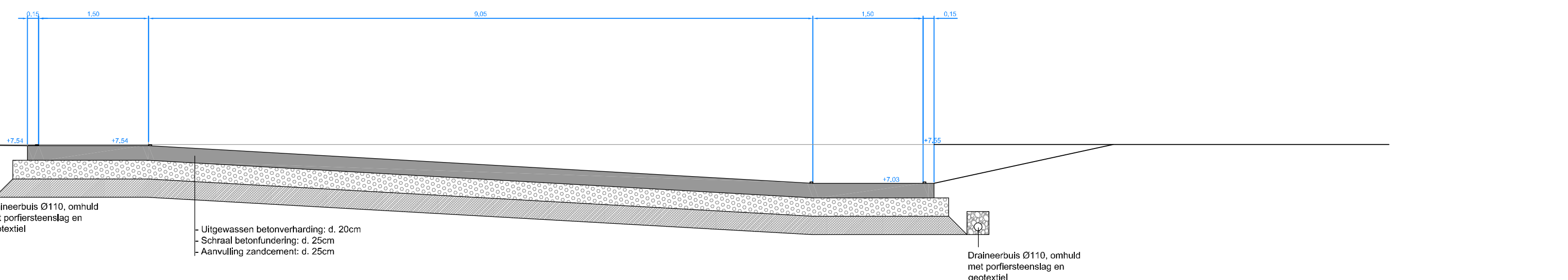


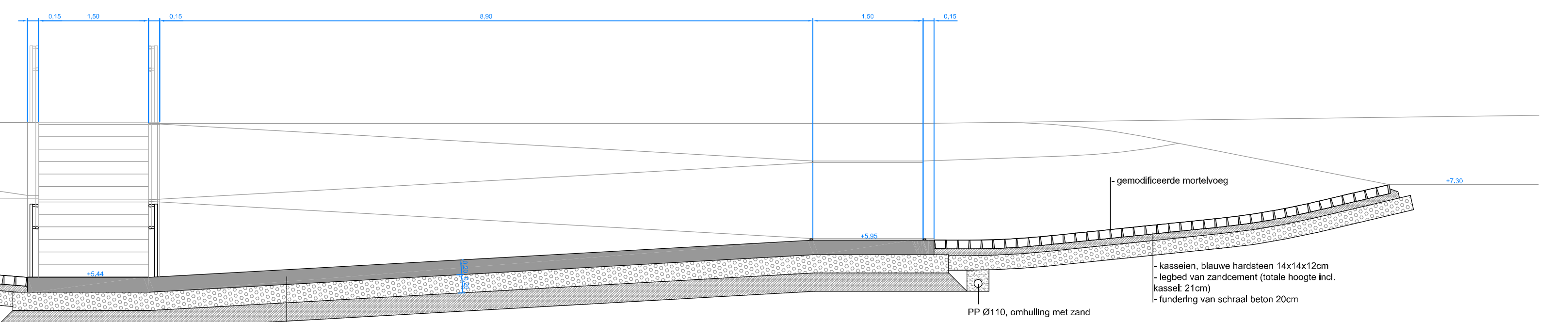
VOORAANZICHT 1/50



DP2D



DP2E



DP2F



DP2A

DP2A

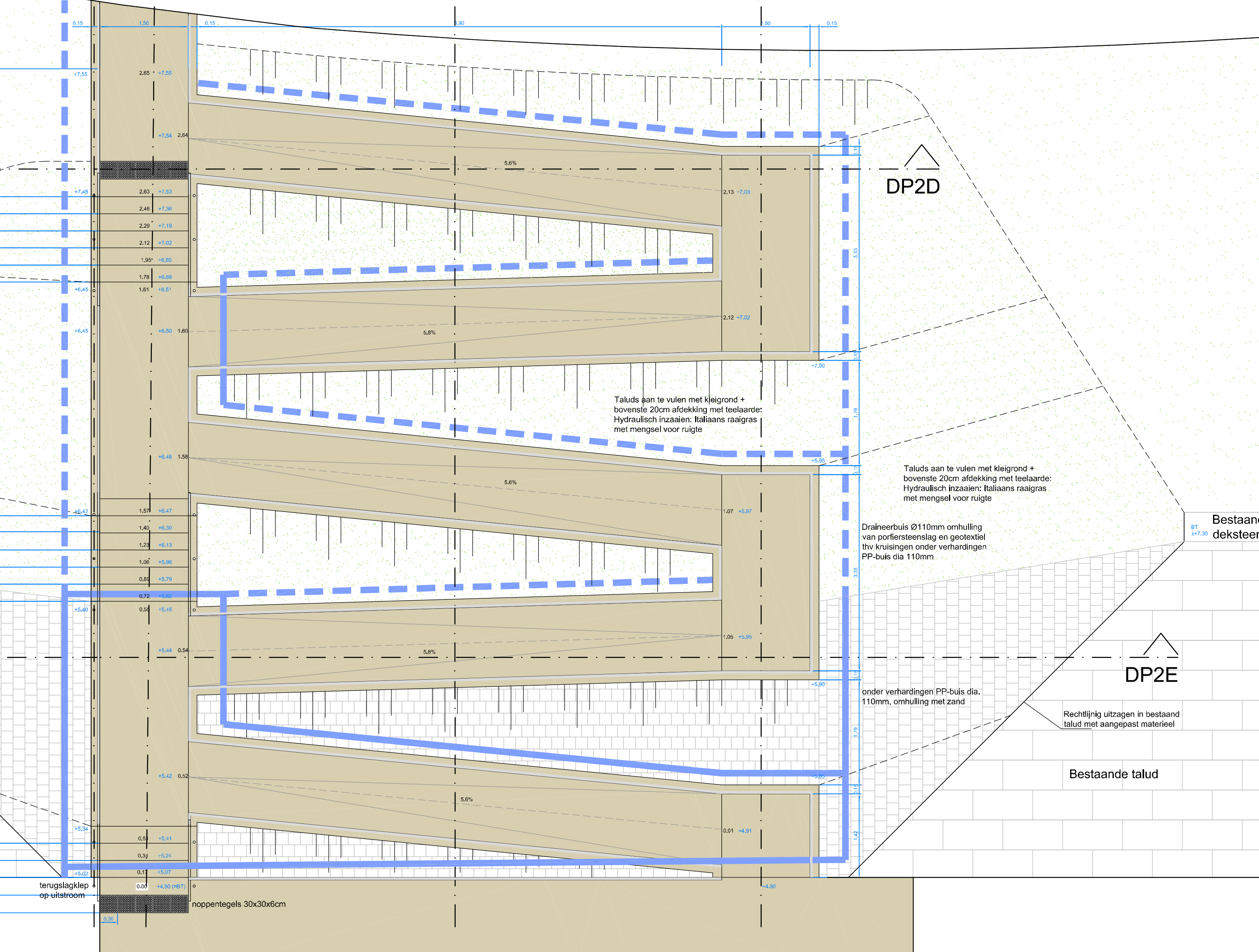
DP2B

DP2B

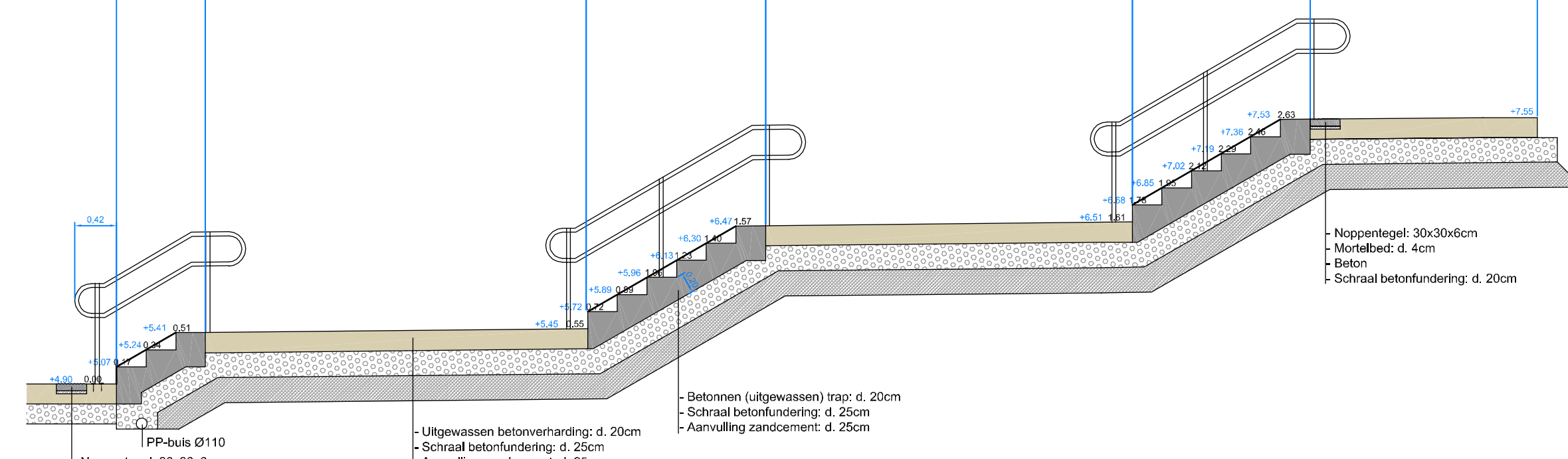
DP2C

DP2C

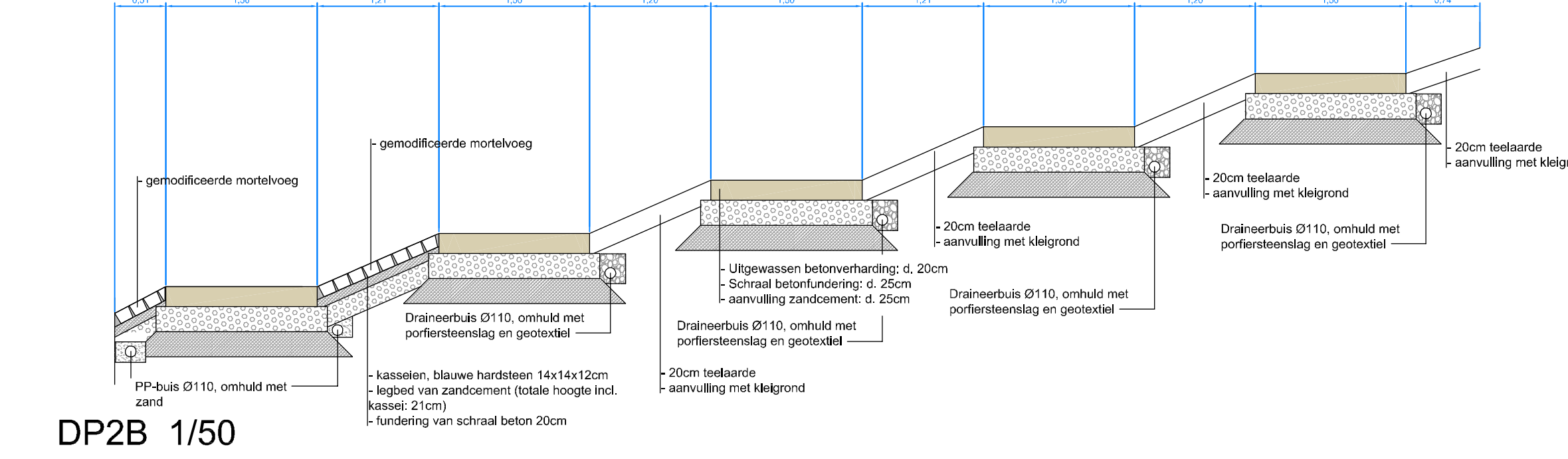
GRONDPLAN 1/50



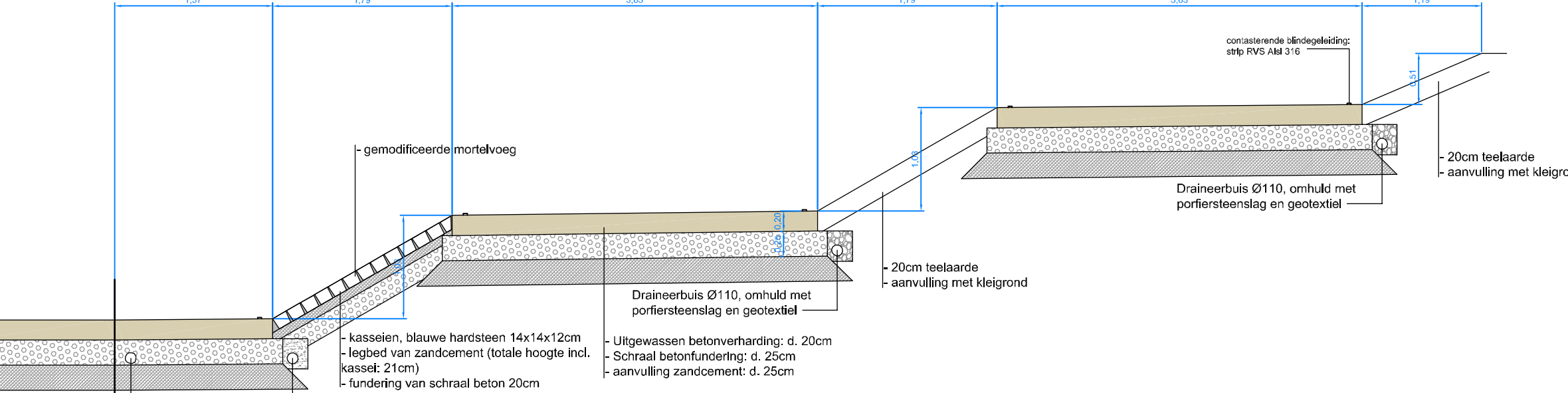
DP2A 1/50



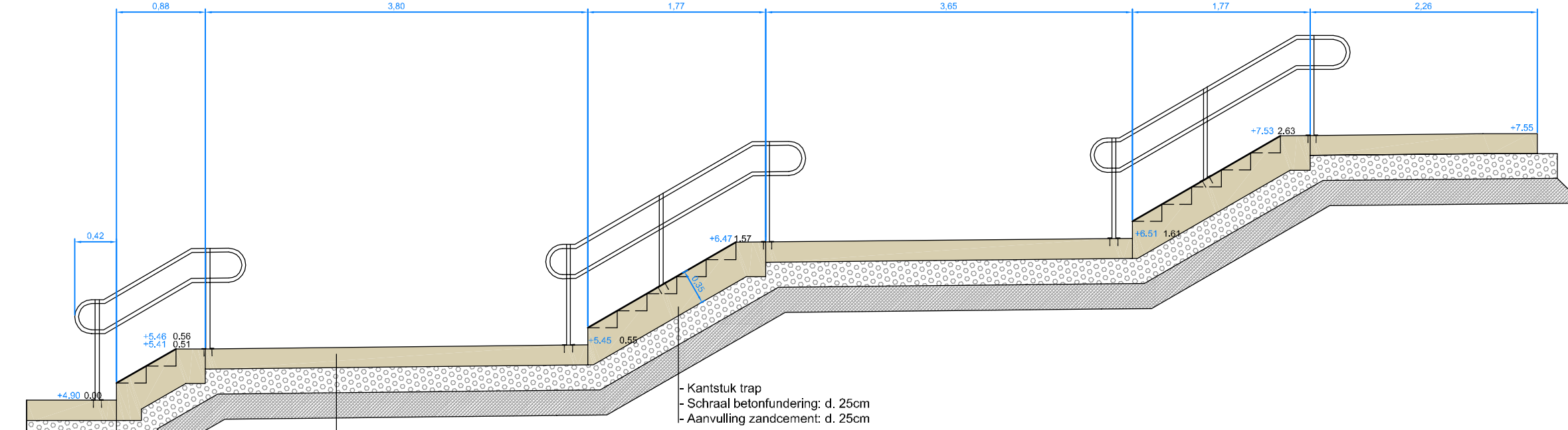
DP2B 1/50



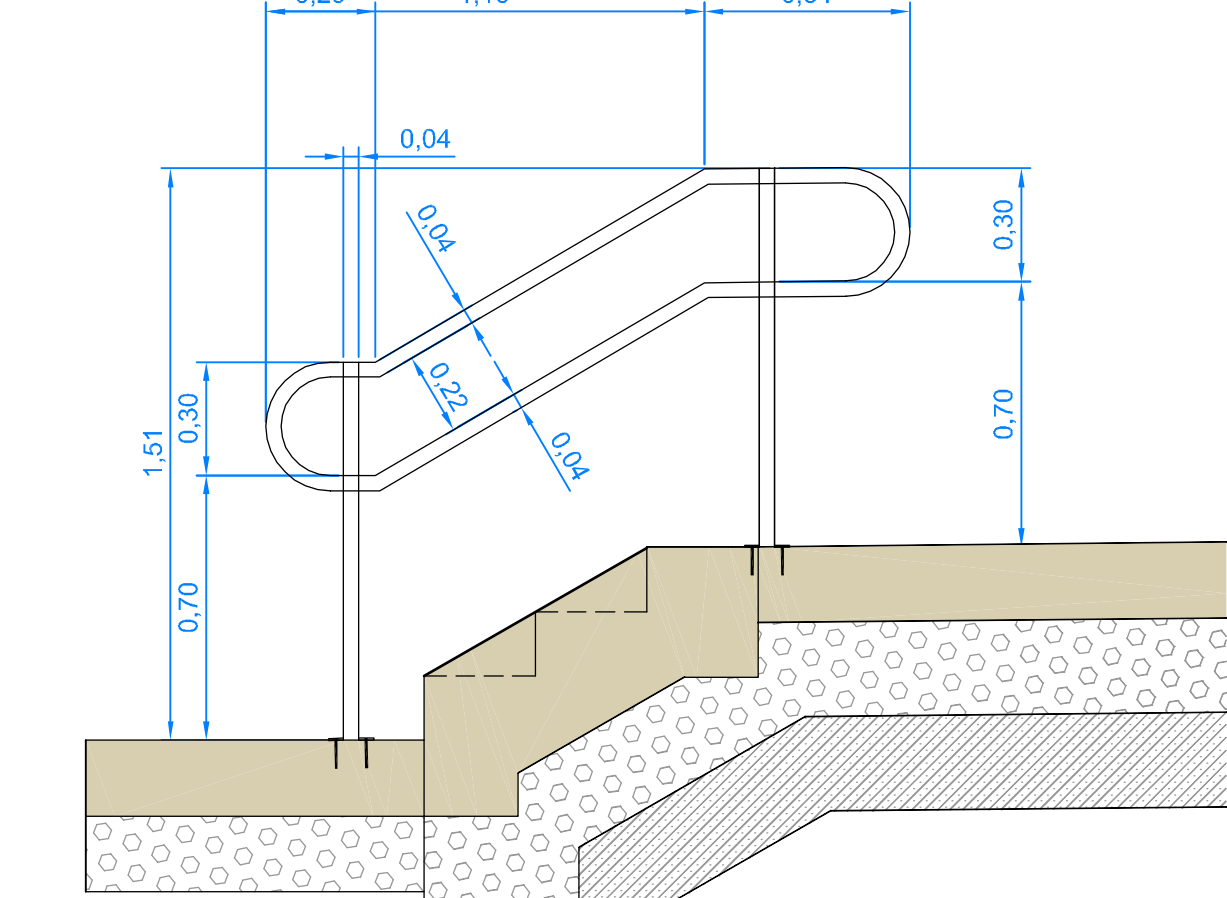
DP2C 1/50



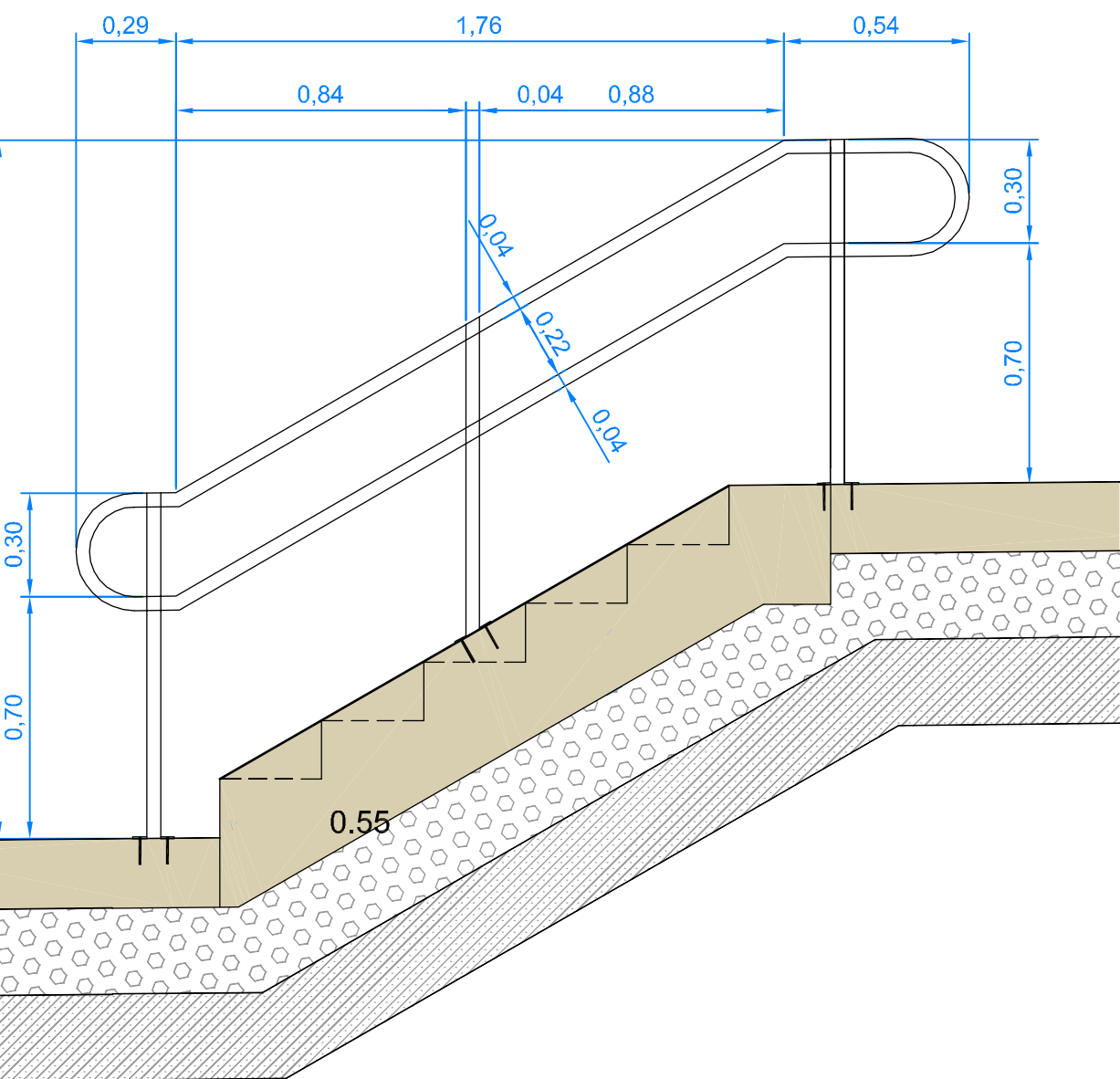
DP2F 1/50



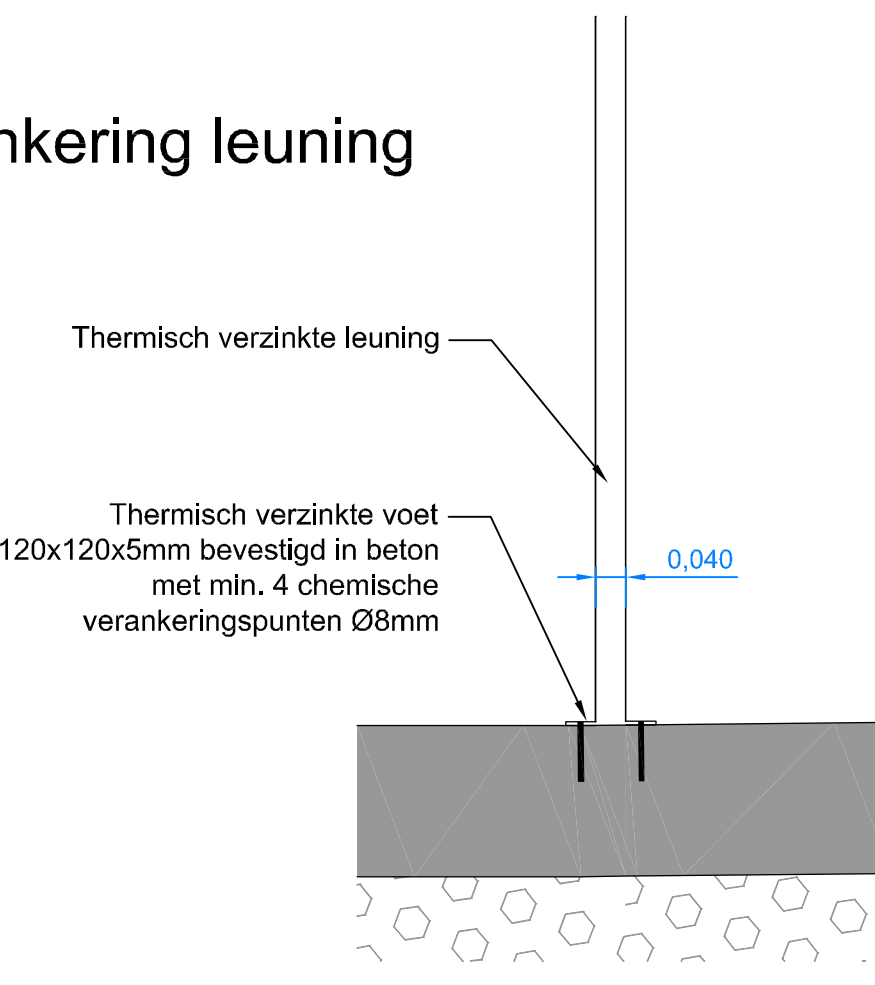
Detail leuning 3 optreden 1/25



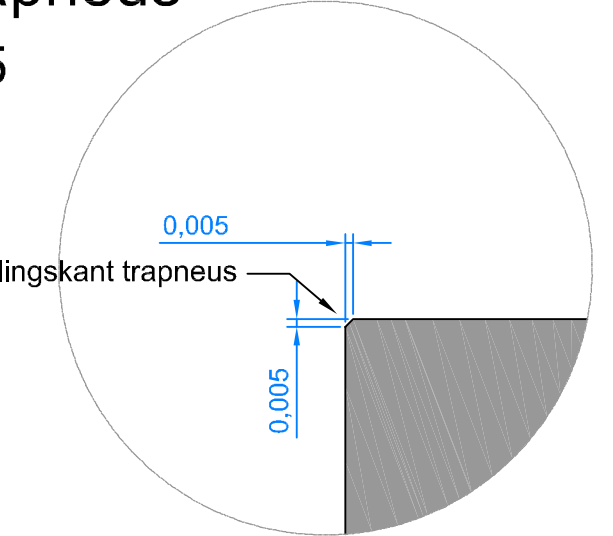
Detail leuning 6 optreden 1/25



Detail verankering leuning
Schaal 1/10

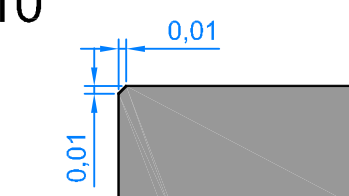


Detail trapneus
Schaal 1/5

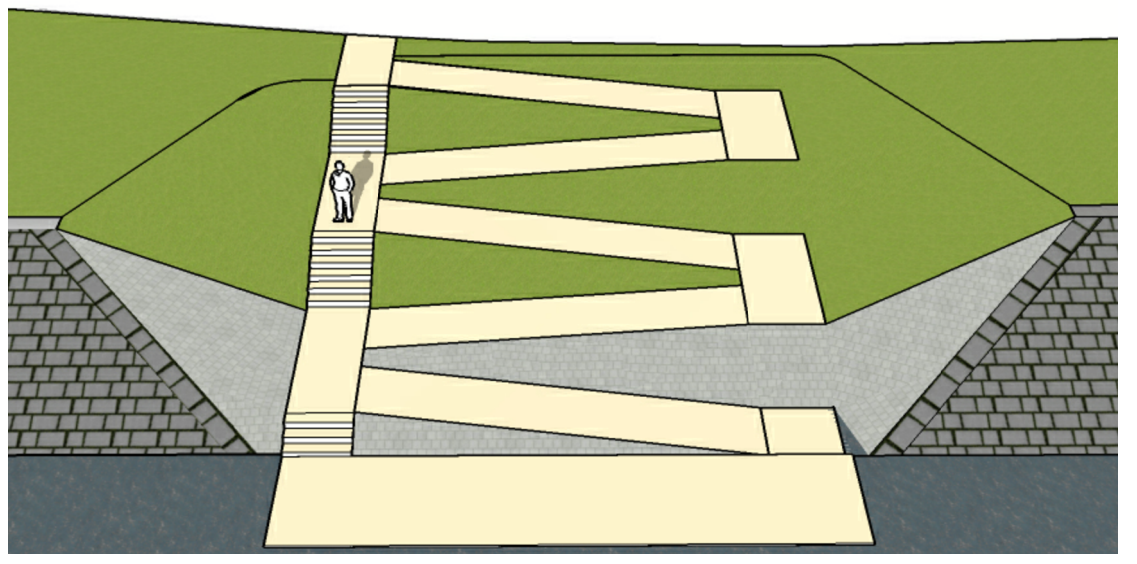


Alle hoeken van de beton dient te zijn voorzien van
vellingkant 1 op 1 cm

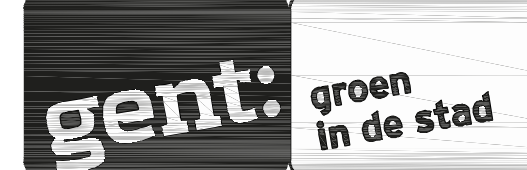
Schaal: 1/10



3D-visualisatie taludering



DEPARTEMENT PUBLIEKE RUIMTE
Groendienst



Wijkpark Houtdokpark

ONTWERP DOSSIER

DETAILS HELLING EN TRAP

SCHAAL: 1-50

Tom Beyaert
Landschapsarchitect

ir. Mieke Schauvliege
Directeur

Reginald Claeys
Departementshoofd
Departement Publieke Ruimte

Mieke Hullebroeck
Stadssecretaris

Rudy Coddens
Scheep van sinterbroed, werk
armoedebestrijding en openbaar groen



Ginestraatweg nr 112
8400 Jabbeke (Vlaanderen)
Tel: 051 20 31 31 Fax: 051 20 31 31
Wijzigingsaankomst
www.lobellestudieboek.be

Ligging: 9000 GENT
Knoopparklaan - Houtdokpark
kaderstrake oppervlakte: 3,2ha
perceel: 3167R, 3168R, 3169PSN

A	17/02/2017	Libelle	opmaak teksten ontwerpdocument
B	30/04/2017	Libelle	Aanpakken ontwerpdocument na opmerkingen Stad Gent
C	17/07/2017	Libelle	Aanpakken na overleg 13/05/2017 met Stad Gent
D	01/09/2017	Libelle	Aanpakken na opmerkingen Stad Gent 17/08/2017
E	27/10/2017	Libelle	Aanpakken na opmerkingen Stad Gent
F	20/12/2017	Libelle	Aanpakken na opmerkingen Stad Gent